



INSTA-PANEL™ SERIES

MODEL NSTA3826VA300

DESCRIPTION

Frequently jobs are done on a fast track basis in our industry. **Insta-Panels** were created for a fast turnaround on a control panel job, saving time and labor. **Insta-Panels** are built at Kele in three sizes: small, medium, and large. Each panel is set up with transformer(s), terminal blocks, wire duct, convenience outlet, additional DIN rail and a perforated back panel for easy mounting of customer parts. Pick your size panel based on the interior space needed for mounting components.

FEATURES

- **NEMA 1 enclosure**
- **Convenience outlet**
- **An extra piece of DIN rail is provided**
- **Fused primary (incoming 120 volt 10 Amp)**
- **Fused secondary (24 volts 4 amps)**
- **White wire duct 3" high x 1" wide**
- **Separation of high and low voltage wiring**
- **Prewired power terminals, primary and secondary**
- **Blown fuse indication on incoming 120 VAC**
- **Perforated back panel**

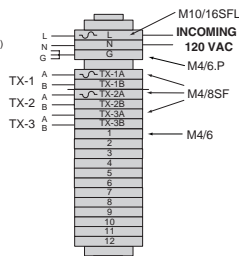
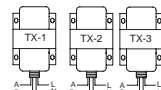
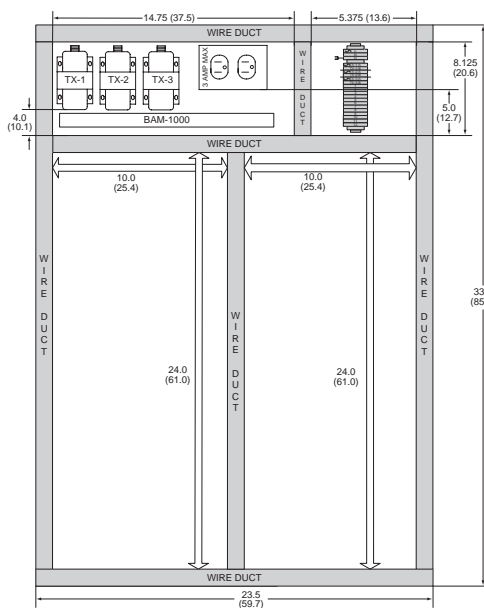


SPECIFICATIONS

Power	(3) 120/24 Volt transformer 300 VA
Weight	71lbs (20.4 Kg)
Panel size	38"H X 26"W X 7"D (96.5 x 66 x 17.8 cm)
Panel Color	Dark brown body and light tan door
Interior panel mounting dimensions	See detail

DIMENSIONS / WIRING

in
(cm)



Bill of Materials

- 1 - RET3826 Enclosure and Perf Panel
- 3 - 691-K1 Transformer
- 1 - PRK Duplex Receptacle
- 1 - BAM-1000 Aluminum DIN Rail
- 1 - M10/16SFL Primary Fuse Holder
- 1 - M4/6.P Grounding Terminal Block
- 3 - M4/8SF Terminal Block
- 16 - M4/6 Terminal Block
- 3 - FEM8S Fuse Holder End Section
- 2 - FEM6 End Section
- 3 - BAM2 End Stop
- 1 - RC610/1-50 Marker Tags
- 1 - RC610/B Blank Marker Tag
- 2 - T1-1030W White Wiring Duct
- 1 - GF-10 Primary Fuse
- 3 - K235-4 Secondary Fuse
- 1 - LEN indication lamp for blown fuse

ORDERING INFORMATION

MODEL	DESCRIPTION
NSTA3826VA300	Insta-Panel, (3) 100 VA transformers, outlet, 12 available terminal blocks